

- 1
- 2
- 3
- 4
- 5
- 6
- 7
- 8
- 9
- 10
- 11
- 12
- 13
- 14
- 15
- 16
- 17
- 18
- 19

MATERIAL

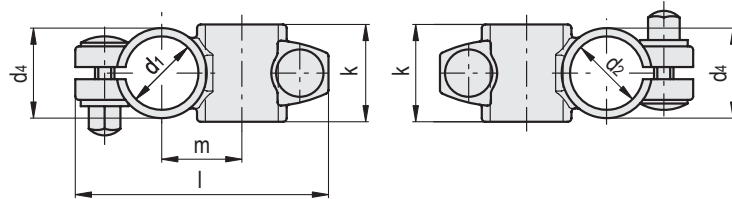
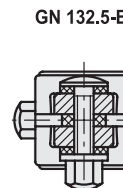
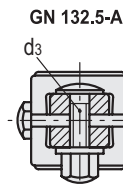
Cast AISI CF-8 stainless steel, sandblasted matte finish.
 AISI 304 stainless steel screws and washers.
 AISI 304 zinc-plated steel nuts.

STANDARD EXECUTIONS

- **GN 132.5-A**: without sealing washers
- **GN 132.5-B**: with acetal resin based (POM) technopolymer sealing washers and silicone closing ring.

FEATURES AND APPLICATIONS

GN 132.5 connecting clamps are shaped so as to provide an optimum clamping with tubes GN 990 (see page 1368).
 The particular shape of the screws and nuts prevents the formation of condensation.
 In the execution GN 132.5-B, the presence of technopolymer sealing washers and silicone ring allows the sealing of the holes and threads making them waterproof.



Conversion Table	
1 mm = 0.039 inch	
d1	
mm	inch
30	1.17
40	1.56
50	1.95

GN 132.5-A

Code	Description	d1	d2	d3	d4	k	l	m	⚖
GN.42991	GN 132.5-B30-B30-A-4	30	30	M8	37	40	104	33	296
GN.42993	GN 132.5-B40-B40-A-4	40	40	M10	50.3	56	133	45	732
GN.42995	GN 132.5-B50-B50-A-4	50	50	M10	60	65	150	53	970

GN 132.5-B

Code	Description	d1	d2	d3	d4	k	l	m	⚖
GN.42992	GN 132.5-B30-B30-B-4	30	30	M8	37	40	104	33	296
GN.42994	GN 132.5-B40-B40-B-4	40	40	M10	50.3	56	133	45	732
GN.42996	GN 132.5-B50-B50-B-4	50	50	M10	60	65	150	53	970

Tube connectors